

# COLEBROOK HOUSING SOCIETY



# TAILOR MADE SUPPORT

**Support packages developed by the  
individual for the individual.**

## **Colebrook Housing Society has set up a new service called Tailor Made Support – A service that:**

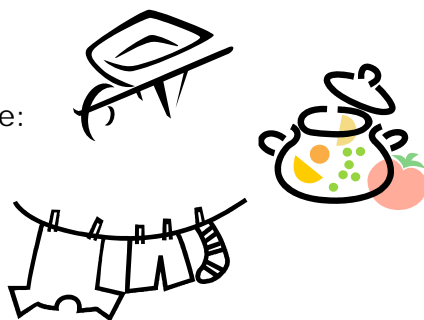
- Offers bespoke support packages to help you meet your needs and achieve your goals.
- Caters to a variety of people with different needs.
- Has a team of experienced, flexible staff available who are committed to empowerment, improving the quality of life for individuals and fair access to all.

### **Who can access the support?**

Anyone can access the support packages provided and they will be developed in line with the individuals support needs and reviewed and adapted as directed by the individual.

### **Examples of what can we offer:**

- Help to manage tasks in your home:
  - Light domestic tasks
  - Shopping or meal planning
  - Laundry
  - Cooking
  - Gardening
  - Pet Care
- Managing your money, debts, bills and direct payment records
- Self motivation and emotional support
- Help to access:
  - Training and education
  - Employment
- Socialising, hobbies and interests
- Promoting independence
- Knowing your rights and mediation
- Help with appointments e.g. hospital, GP appointments etc
- Respite / support services for carers



### **What could also be available:**

- Out of Hours support (telephone only)
- Sleep In shifts
- Cover whilst your full time carer / support worker is on annual leave.

## What we don't currently offer:

- Waking night duties
- Personal care or Nursing care
- Administering medication
- Counselling
- Direct advocacy services
- Therapy or a therapeutic community

But we can signpost you if you need help in these areas.

## How much does it cost?

The cost of your support package will depend on your needs and the type of support delivered. We would be happy to meet with you to discuss this.



Here are some examples of where you can access funding:

### **Private funding:**

You do not have to be receiving help from Health or Social Services to receive a Tailor Made Support package. If you are able to fund support yourself then we would be happy to look at this option with you – please contact us for more details.

### **Social and Health services:**

There are self directed support options available throughout health and Social Services. You will have support through Social Services to assess your needs and advise what budget is available for you. The budgets may comprise many different sources of funding.

If you are not receiving help from Social Services but feel that you may need some, then contact your council and they will ask someone to give you an assessment.

### **Independent Living Fund:**

The Independent Living Funds (ILF) provides cash payments from the government to over 21,000 disabled people across the UK. They give people the choice to live inclusive and independent lives in their communities rather than residential care. Information about criteria for the ILF can be found at: [www.ilf.org.uk](http://www.ilf.org.uk)

## **Direct payments:**

Direct payments are local council payments for people who have been assessed as needing help from Social Services, and who would like to arrange and pay for their own care and support services instead of receiving them directly from the local council.

To be eligible you must be:

- **Disabled and aged 16 or over**
- **A Carer aged 16 or over, including people with parental responsibility for a disabled child**
- **An older person**

## **Grants:**

Grants are one off payments to help people stay in their homes, either by paying for adaptations or support to remain independent. Grants are available from local councils or companies and there are many different schemes available.

**We're running a competition to design the Tailor Made Support service logo – look out for the new logo and updated leaflets coming soon.**

In the mean time if you would like more information about Tailor Made Support or to discuss your support needs and payments, please contact Emma Sheer on:

**Tel: 01752 205210**

**Email: [tms@colebrookhousing.co.uk](mailto:tms@colebrookhousing.co.uk)**



Alternatively for information about Colebrook and its services you can look on line at [www.colebrookhousing.co.uk](http://www.colebrookhousing.co.uk)

**If you would like this information in another language or format, e.g. large print, please call 01752 205210**

Colebrook Housing Society Ltd  
3, Woodland Terrace  
Greenbank  
Plymouth  
PL4 8NL